

Utility Tool for POS Instruction

Rev.1.2



Utility Tool is applicable to the following operating system:

- Microsoft Windows 10 (32 bit/64 bit)
- Microsoft Windows 8 (32 bit/64 bit)
- Microsoft Windows 7 SPI (32 bit/64 bit)
- Microsoft Windows Vista SP2 (32 bit/64 bit)
- Microsoft Windows XP Professional SP3 (32 bit)
- Microsoft Windows Server 2012(64 bit)
- Microsoft Windows Server 2008 R2
- Microsoft Windows Server 2008 SP2(32 bit/64 bit)
- Microsoft Windows Server 2003 R2 SP2(32 bit/64 bit)

Driver version	V 1.2.3.19
-----------------------	-------------------

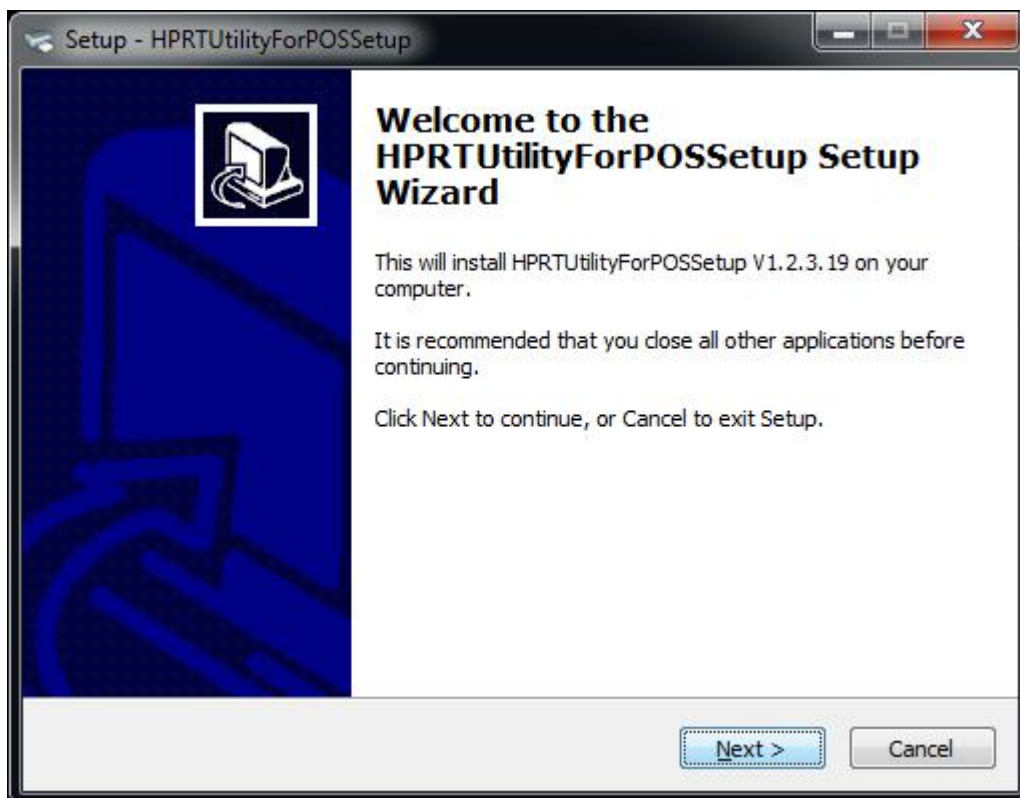
1.Installation of Utility Tool

1.Open the installation package.

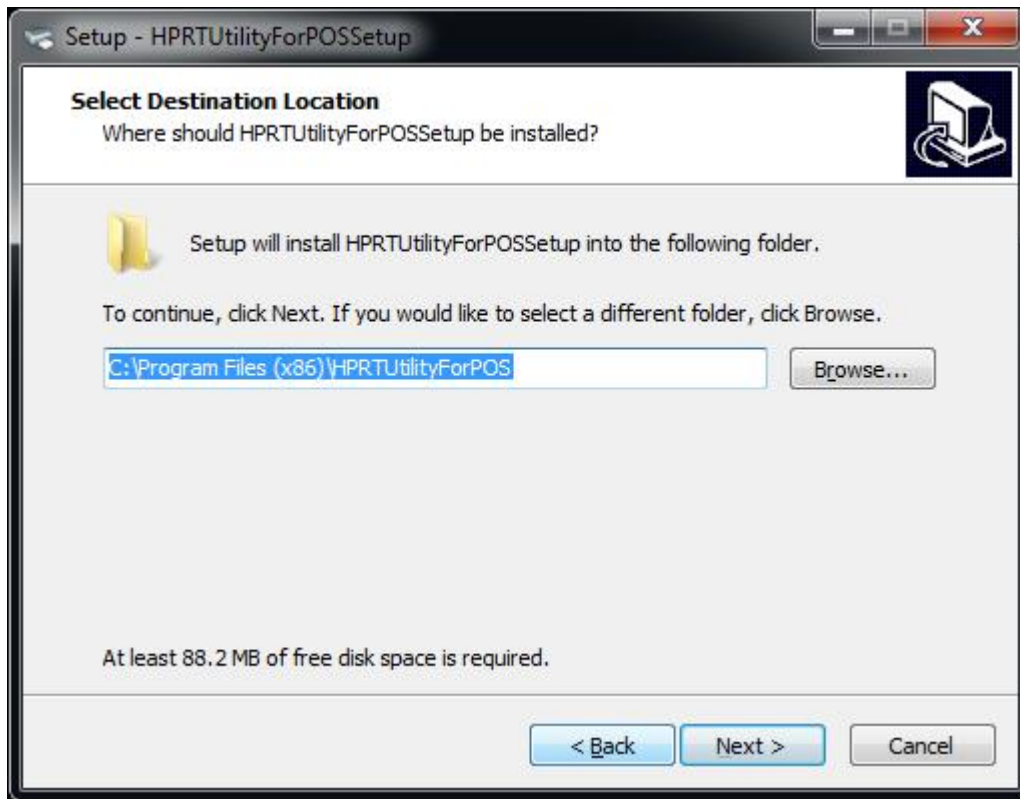
2.Choose "English" and click "OK".



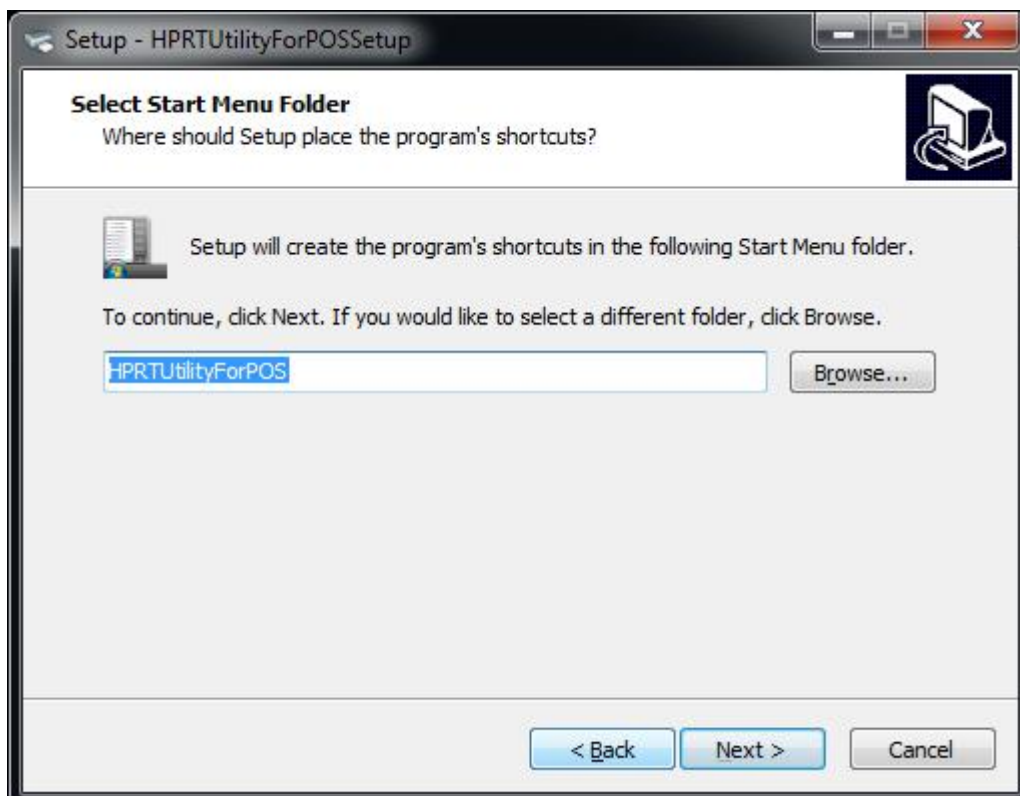
3.Click "Next".



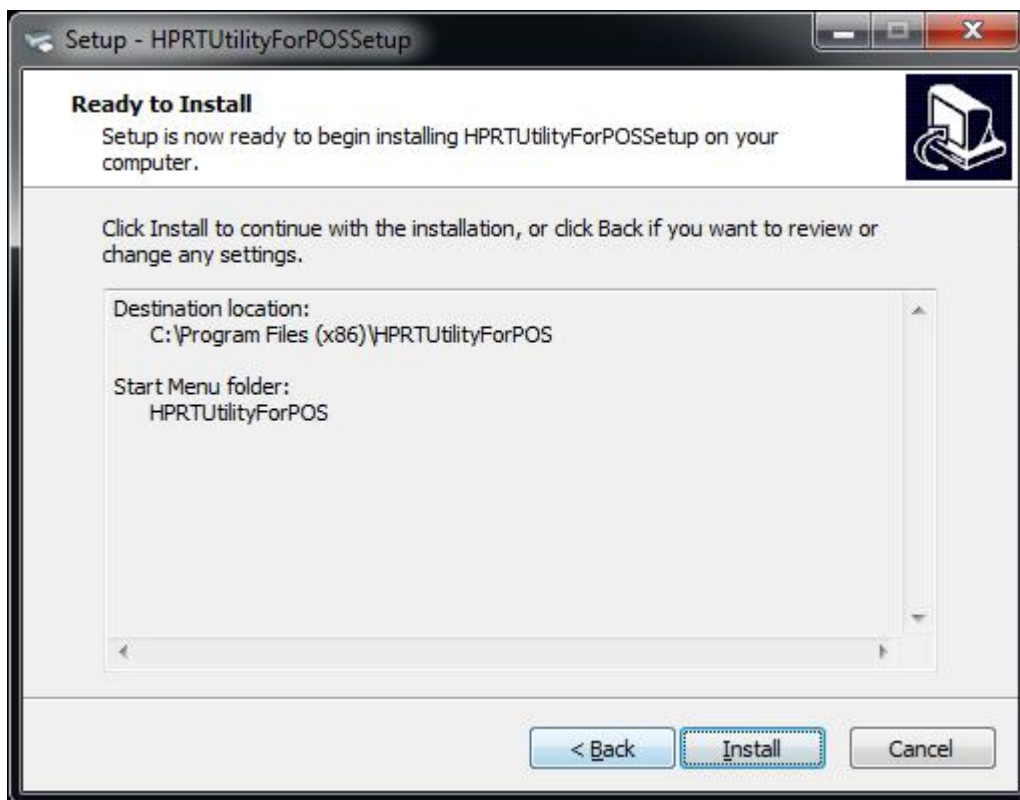
4. Select destination location to install the Utility Tool. Click “Next”.



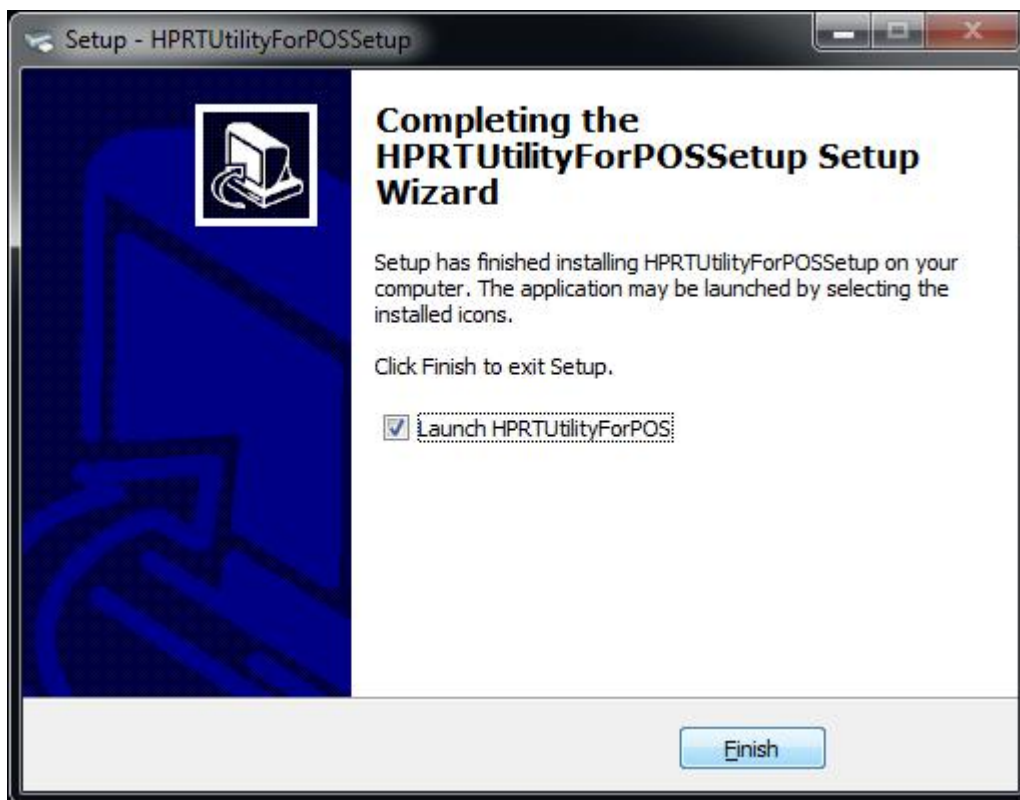
5. Select start menu folder. Click “Next”.




6. Click "Install".



7. Click “Finish”. Utility Tool is installed successfully.

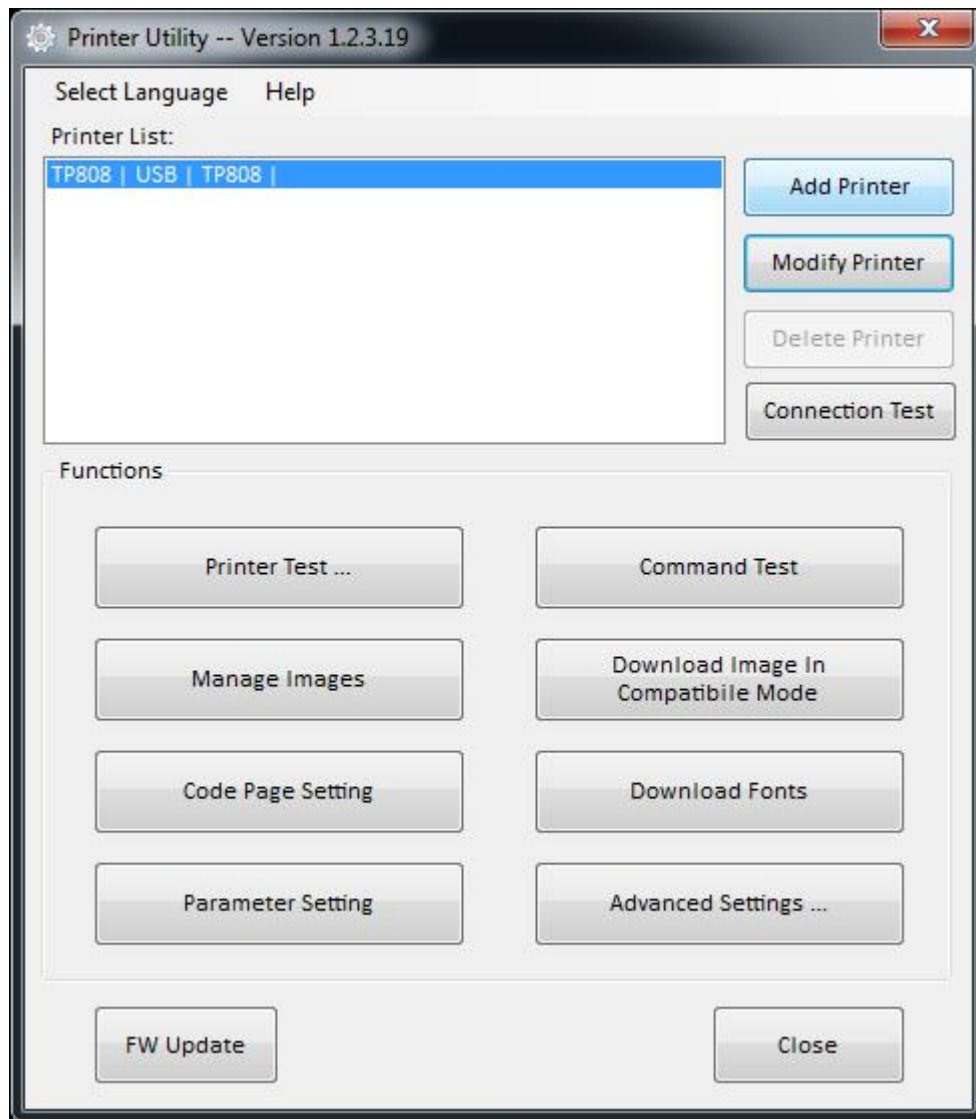


2.Using Utility Tool

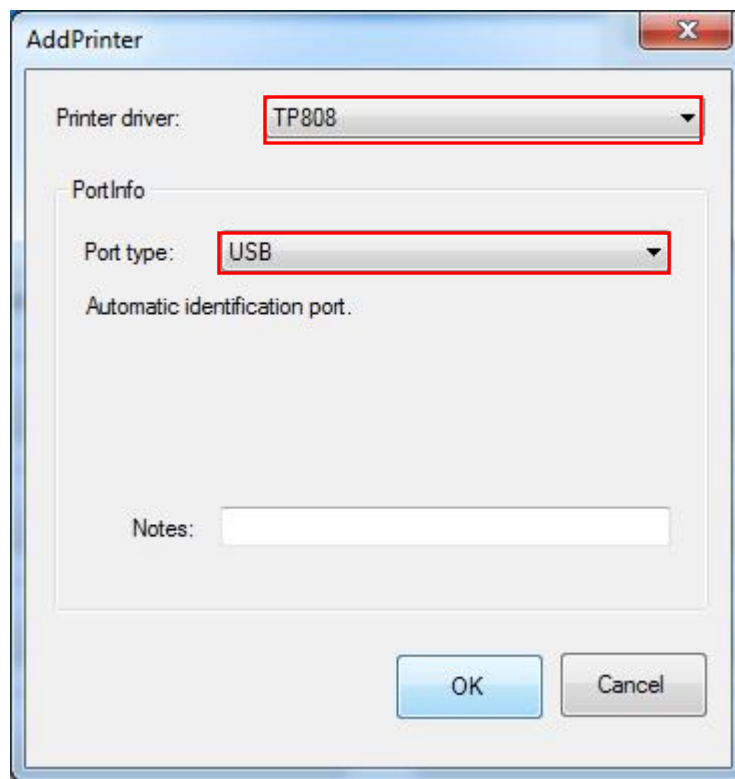
 Warning: In different operating system, screen has slight difference. Please operate it according to the tips. Take TP808 (Windows 7) for example.

● Add printer

1.Click "Add Printer".

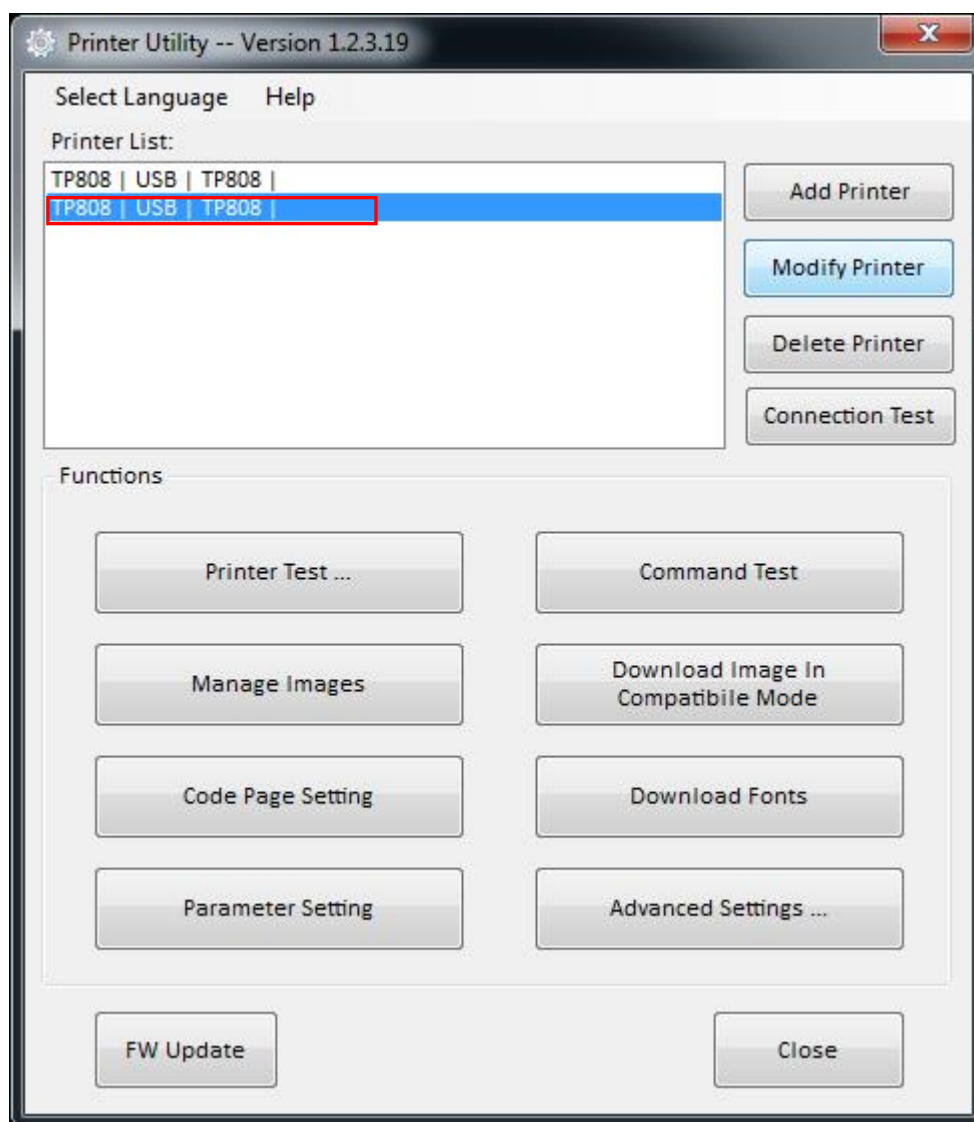


2. Choose the right printer type and port. Then click "OK". (Take TP808 for example.)

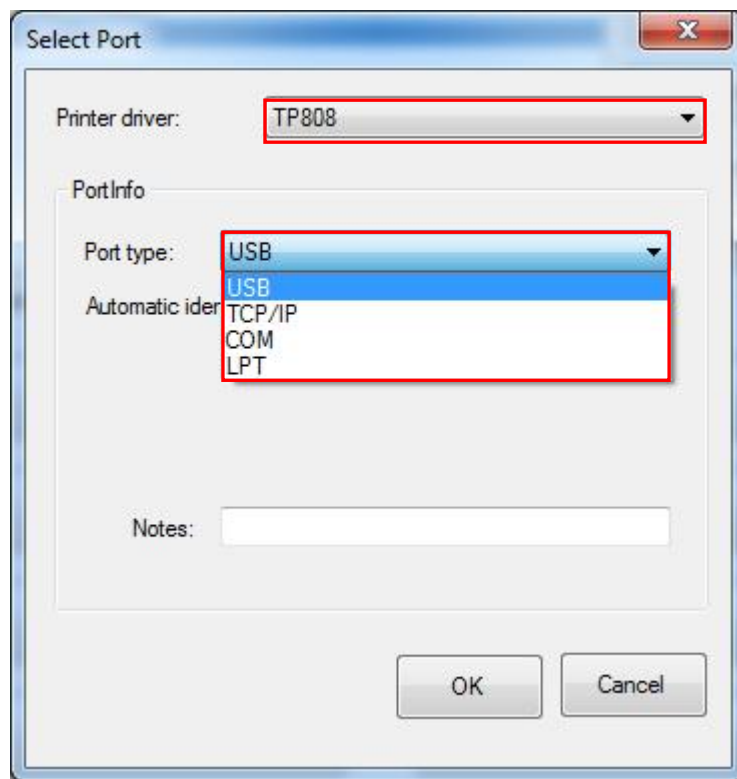


● Modify printer

1. Choose the printer you want to modify in the list. Click “Modify Printer”.



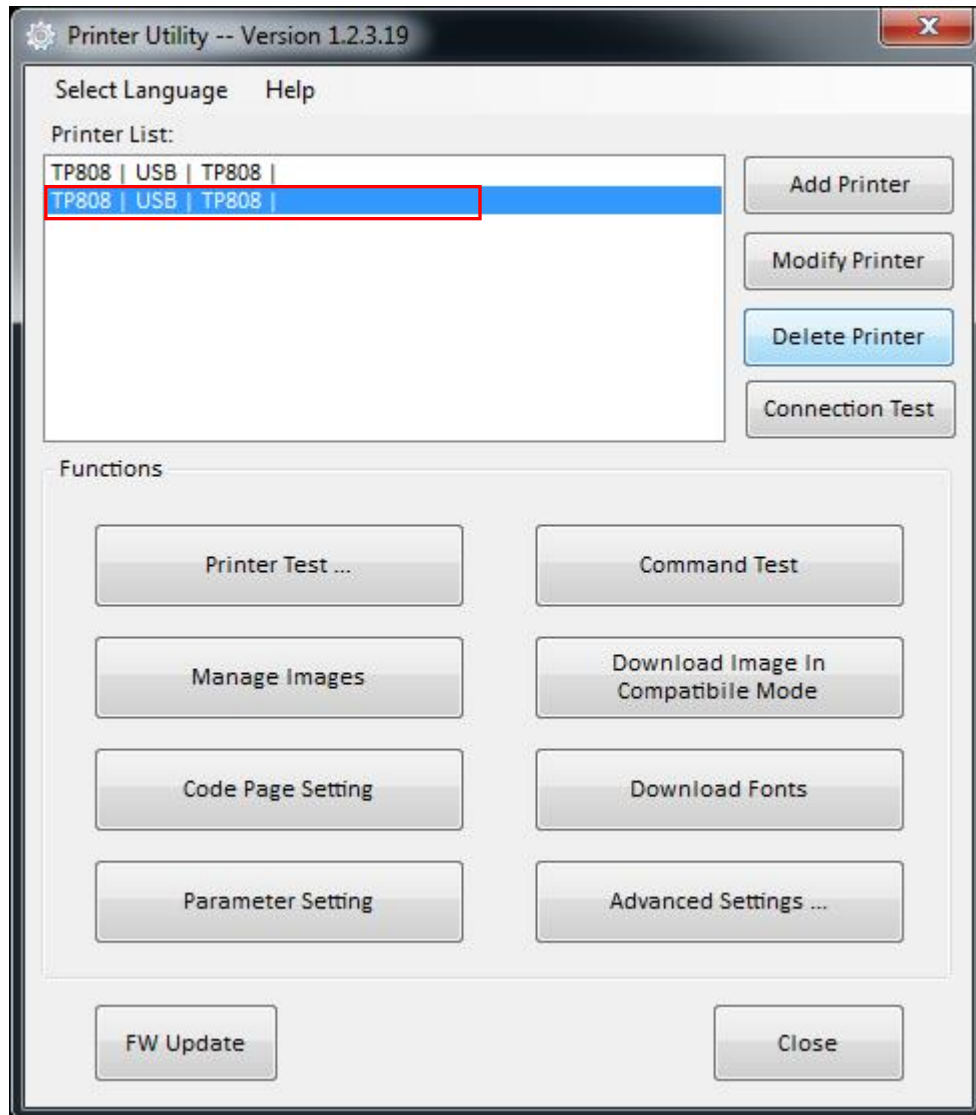
2. Choose the new printer and new port. Then click "OK".



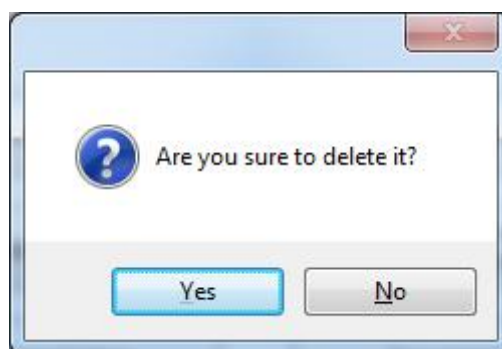
3. The new printer is added successfully.

● Delete printer

1. Choose the printer you want to delete in the list and click “Delete Printer”.



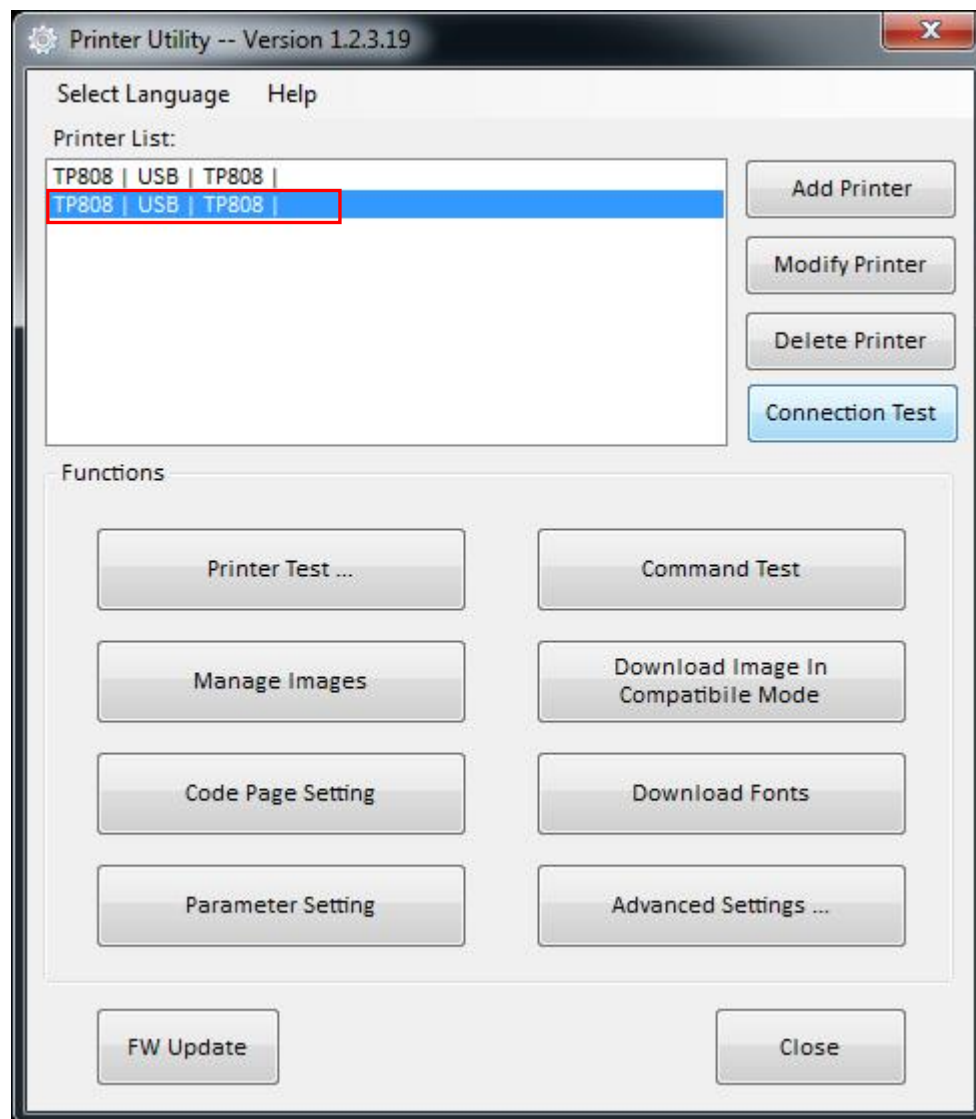
2. Click “Yes”, then the printer is deleted.



● Connection Test

Make sure printer is connected with computer and power on.

1. Choose the printer. Click “Connection Test”.



2.If the connection is successful, it will appear the following window. If the connection is unsuccessful, please connect the printer with computer.

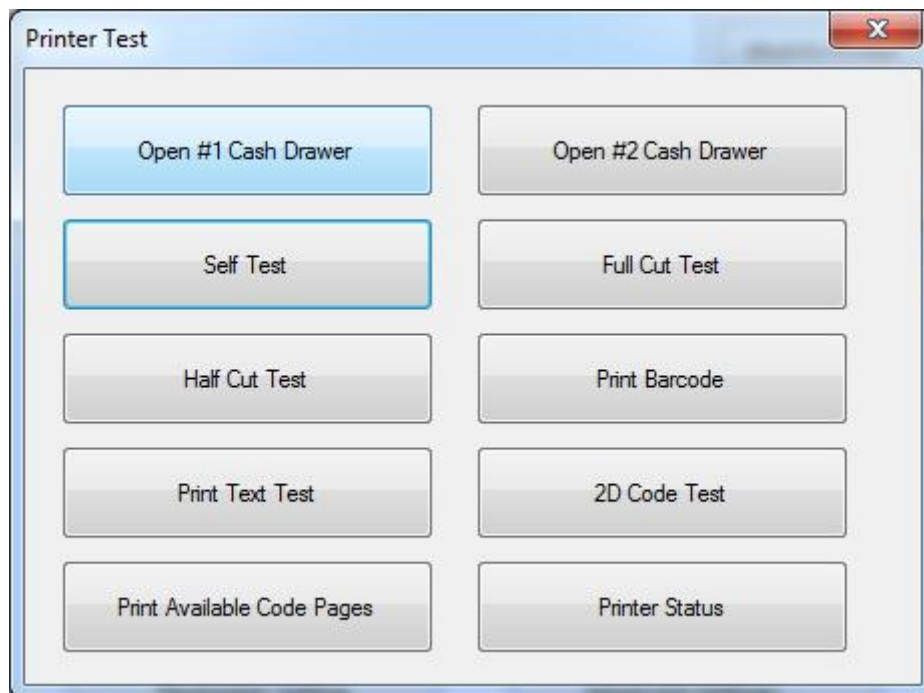


Note:

- 1.Make sure printer is connected with computer and power on.
- 2.Make sure printer is loaded with paper.
- 3.Before using the following function, carry out the "Connection Test" first.

● **Printer Test**

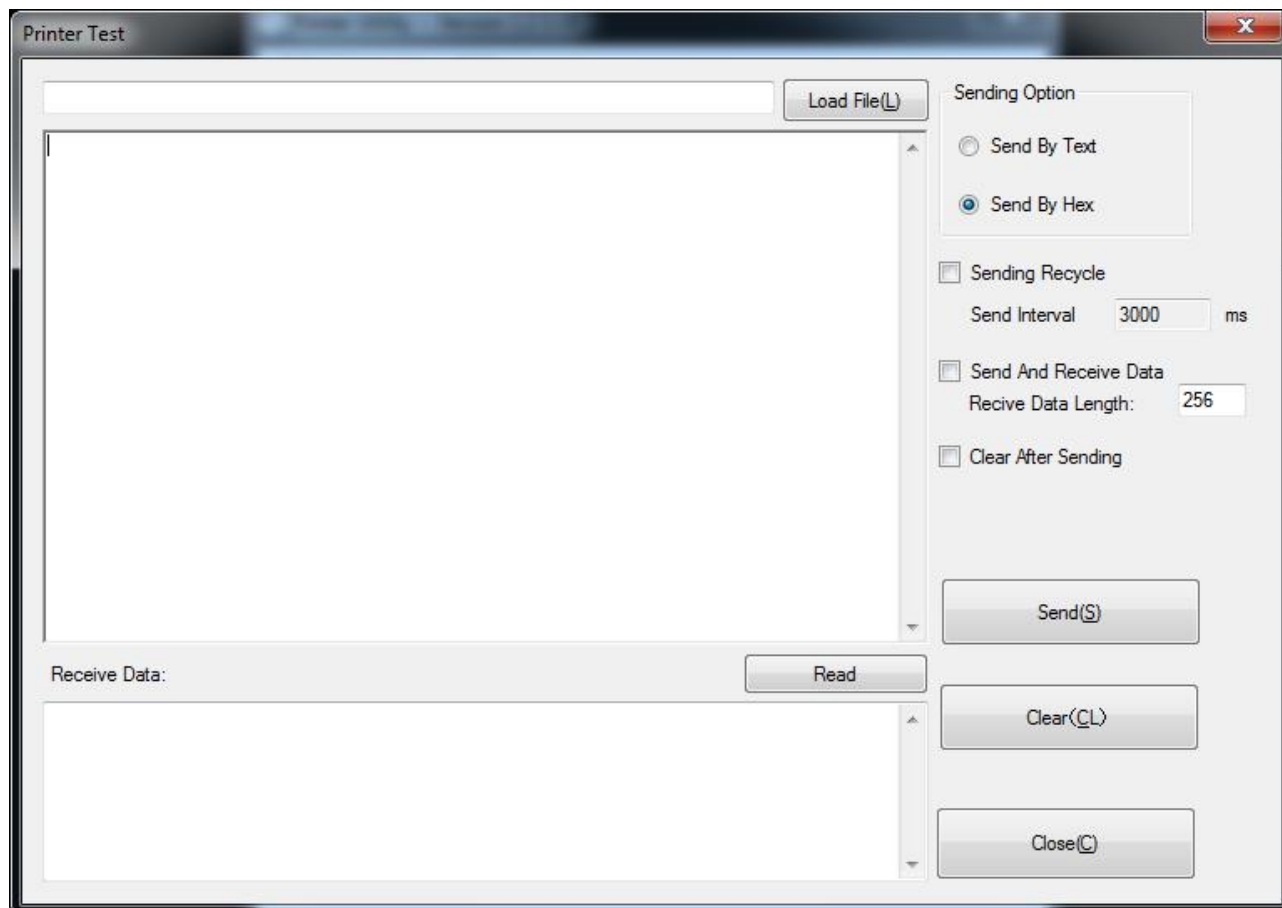
Printer Test contains the below items. Click the button and printer will execute the appropriate action.



● Command Test

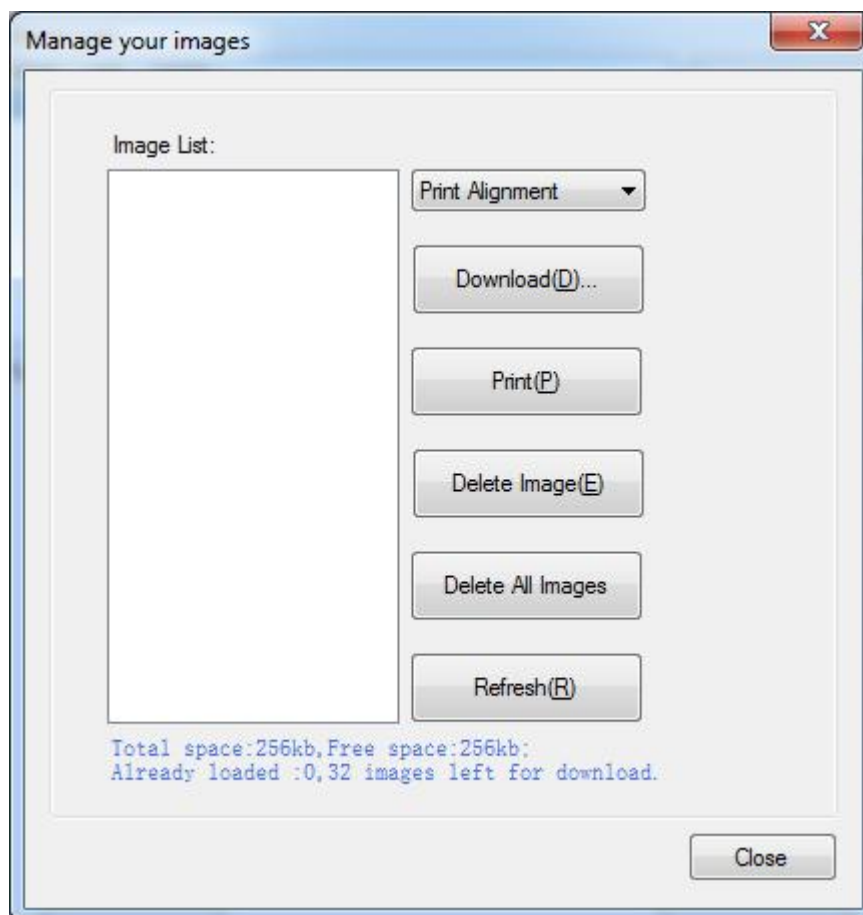
In Command Test, you can send commands to printer. Choose the Text or Hex data.

Choose a file from the existing files or input the command in the input box.

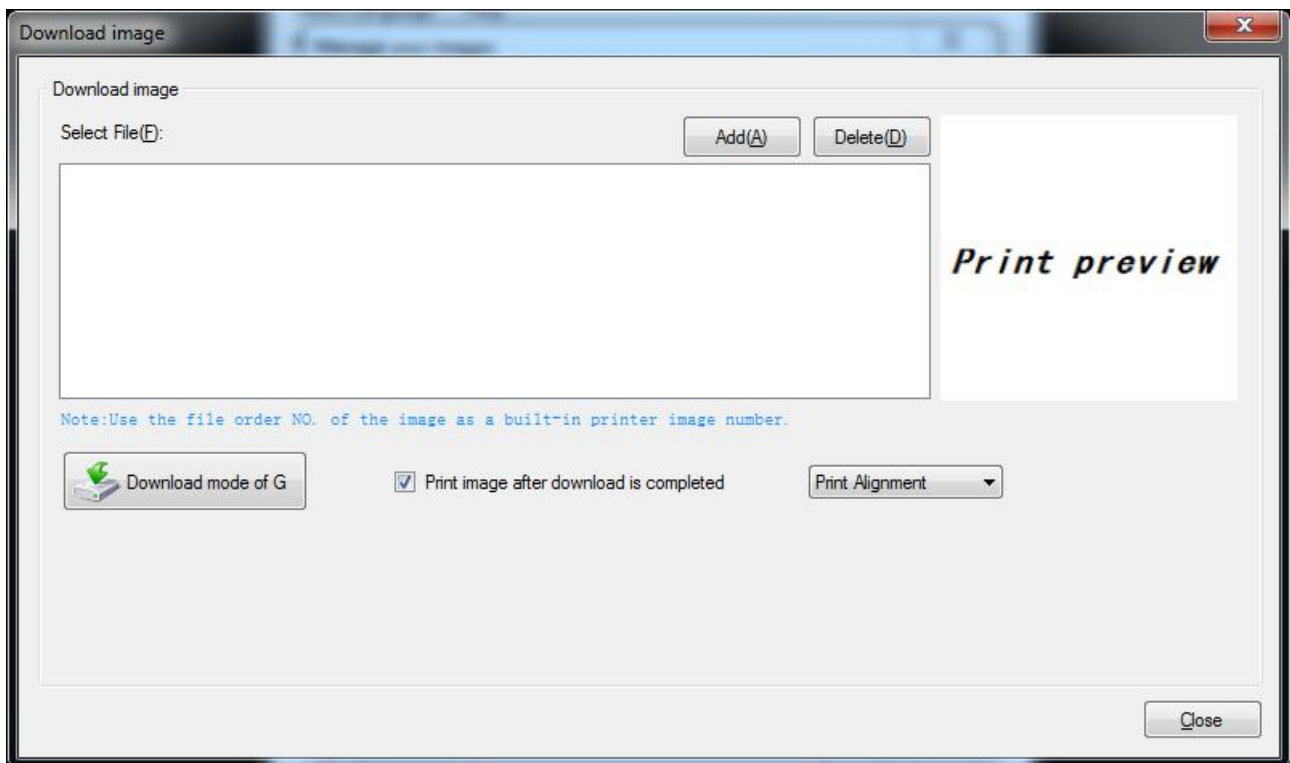


● Manage Images

Choose an image in image list. Click “Print” to print it or click “Delete Image” to delete it.



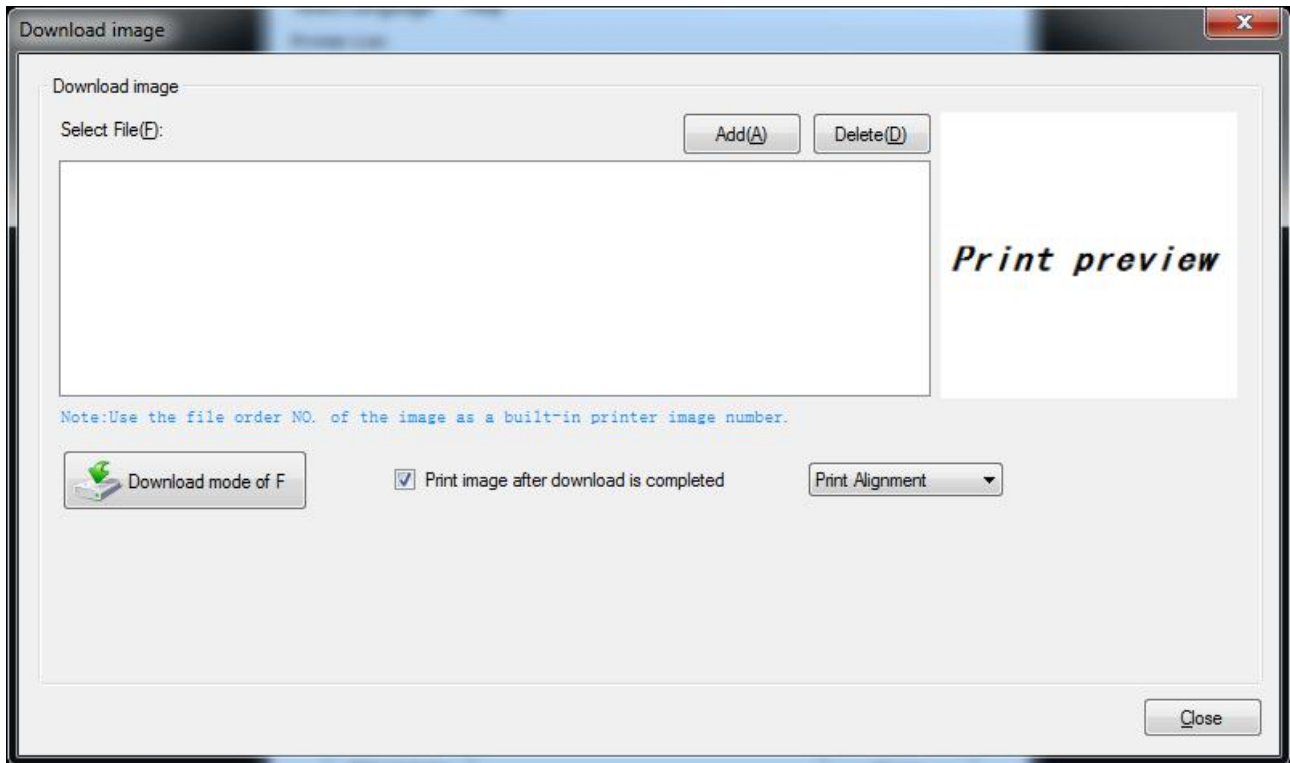
Click “Download(D)” to download a new image into the printer.



Note: The total memory is 256K. The each bitmap should be less than 40K.

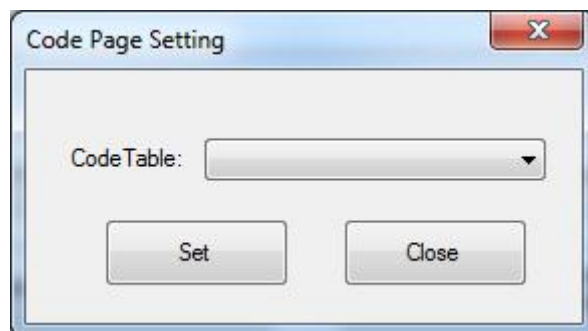
● **Download Image In Compatible Mode**

Download image in compatible mode.



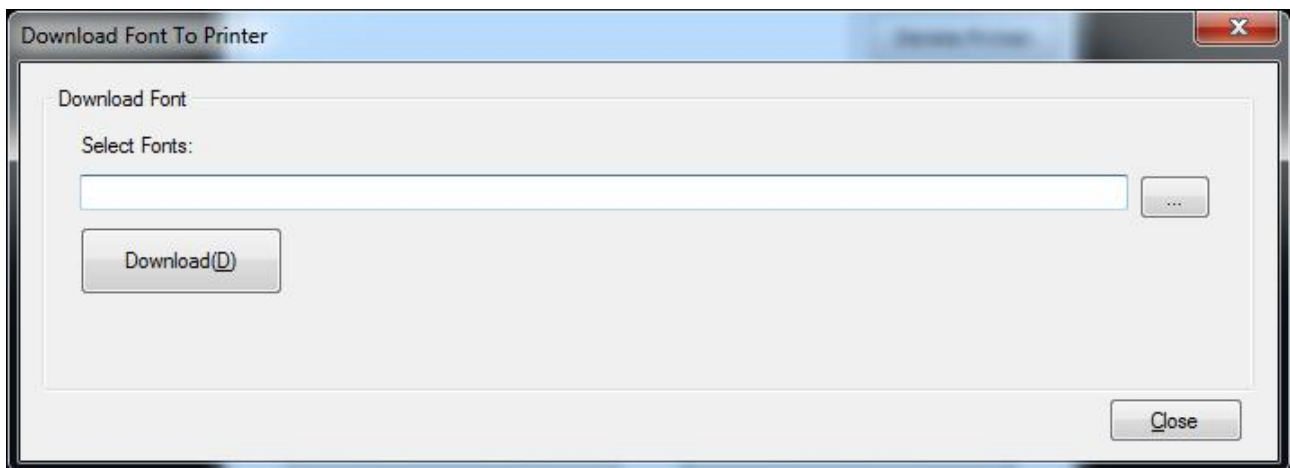
● **Code Page Setting**

Choose the code table from the drop-down menu and click "Setting".



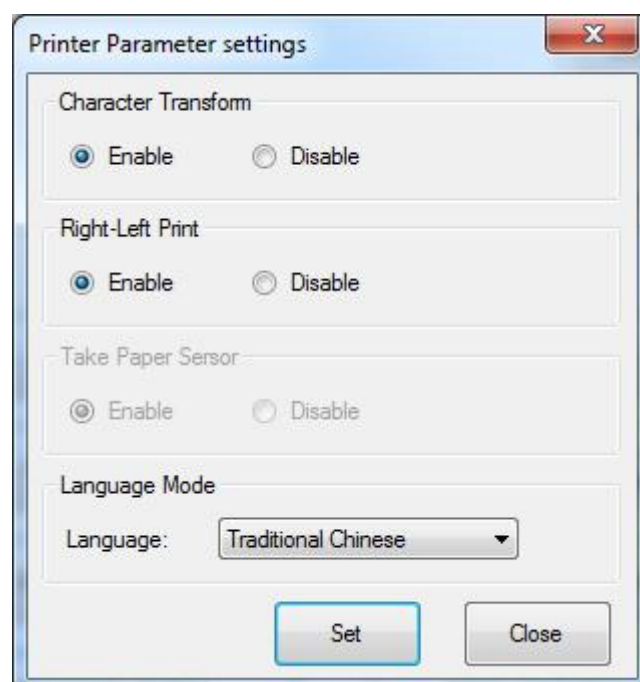
● Download Fonts

Choose the font from existing files and click “Download”. If you checked “Print Sample Text After Download”, the printer will print the sample text after downloading the font.



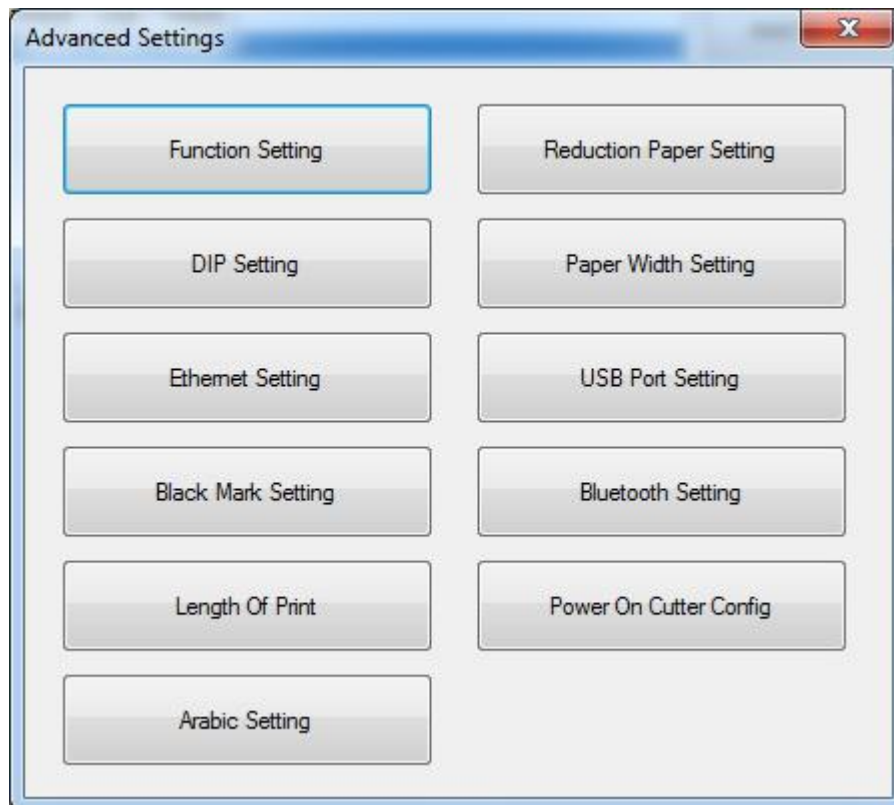
● Parameter Setting

Choose the item to set character transform, right-left print and language mode.



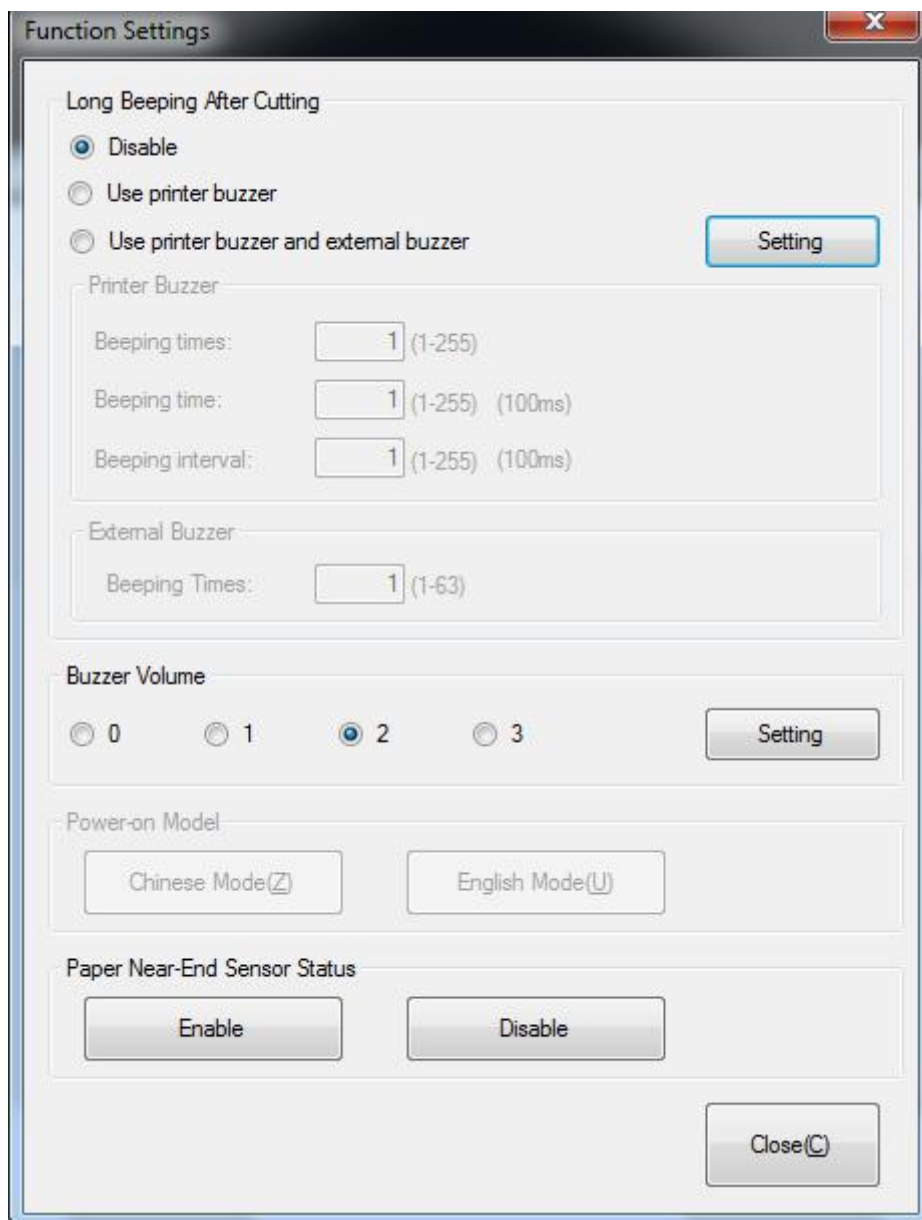
● **Advanced Settings**

Advanced Settings contain following items. Click the button and printer will execute the appropriate action. *The change will take into effect after restarting the printer.*



◆ Function Setting

Choose the item and click “Setting(S)”.

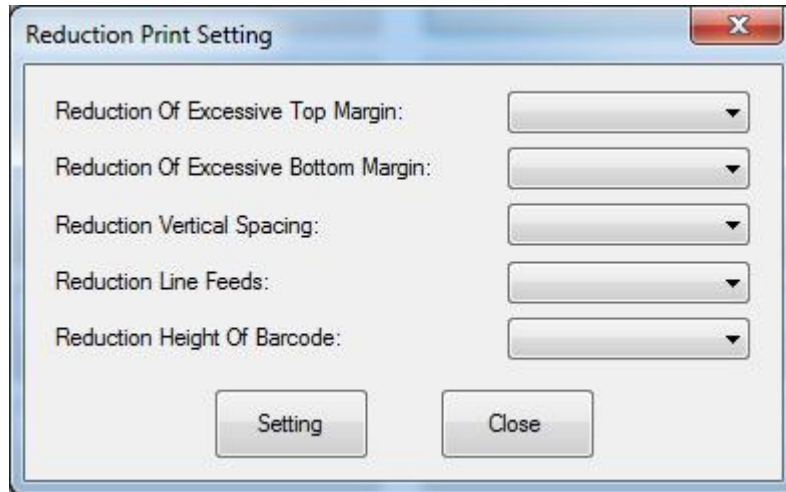


The image shows a 'Function Settings' dialog box with the following sections and controls:

- Long Beeping After Cutting**
 - ☒ Disable
 - ☐ Use printer buzzer
 - ☐ Use printer buzzer and external buzzer
 - Setting** button
- Printer Buzzer**
 - Beeping times: (1-255)
 - Beeping time: (1-255) (100ms)
 - Beeping interval: (1-255) (100ms)
- External Buzzer**
 - Beeping Times: (1-63)
- Buzzer Volume**
 - ☐ 0 ☐ 1 ☒ 2 ☐ 3
 - Setting** button
- Power-on Model**
 - Chinese Mode(Z)** button
 - English Mode(U)** button
- Paper Near-End Sensor Status**
 - Enable** button
 - Disable** button
- Close(C)** button

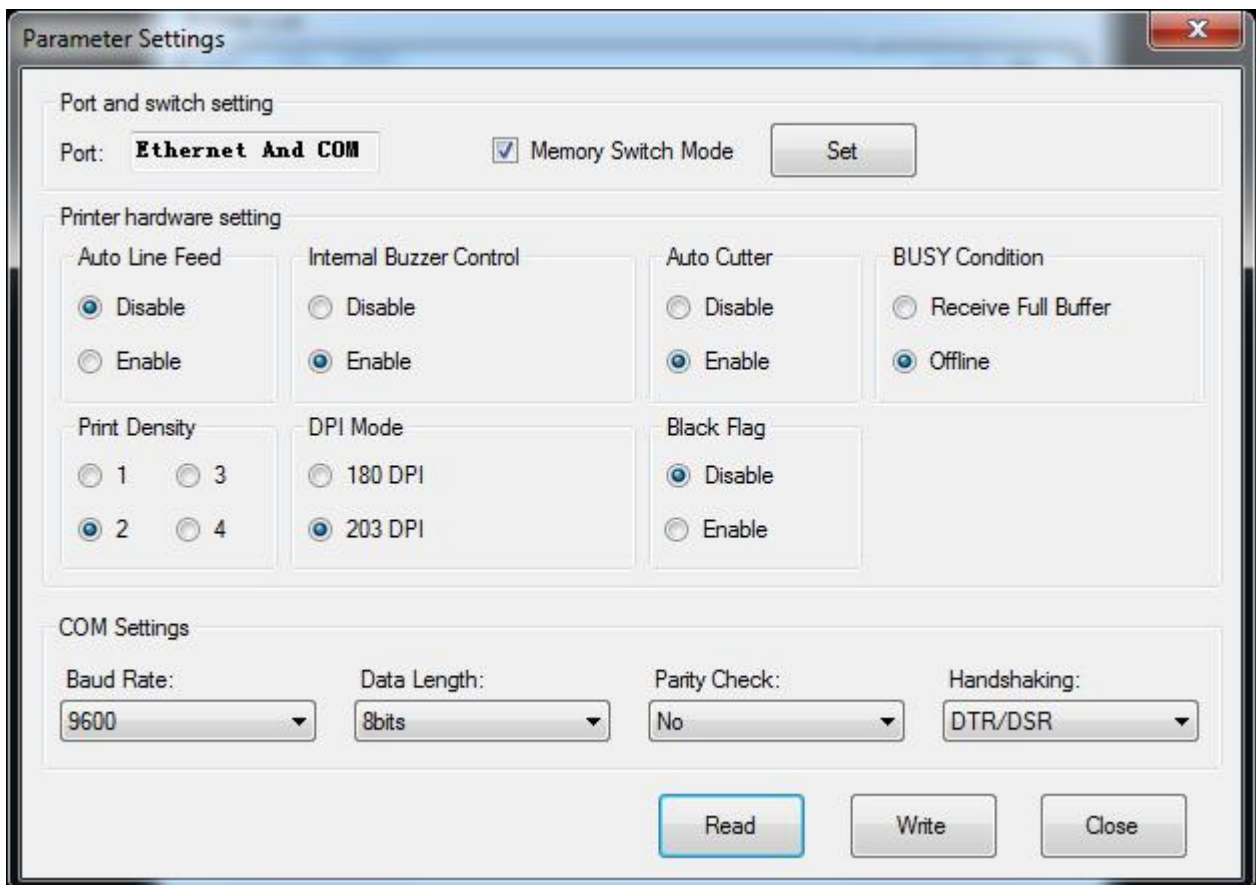
◆ Reduction Paper Setting

Choose the item and click “Setting”.



◆ DIP Setting

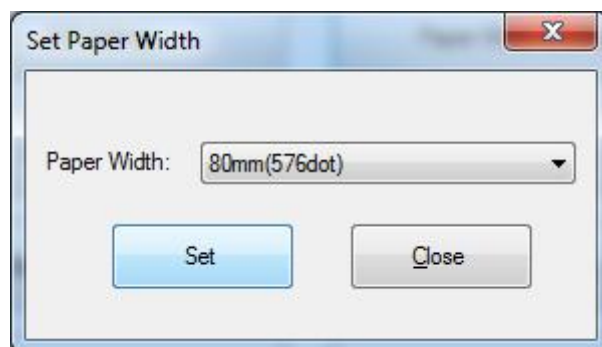
Choose the item and click “Set”.



Note: When DIP setting is set in soft, the DIP switch in the bottom of printer is disable.

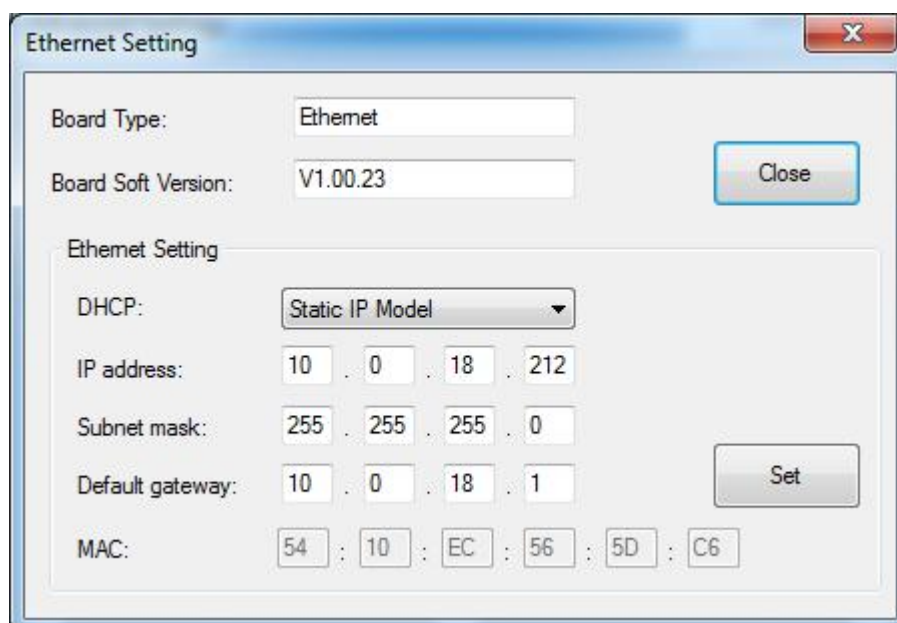
◆ Paper Width Setting

Choose the item and click “Set”.



◆ Ethernet Setting

Choose the item and click “Set”.



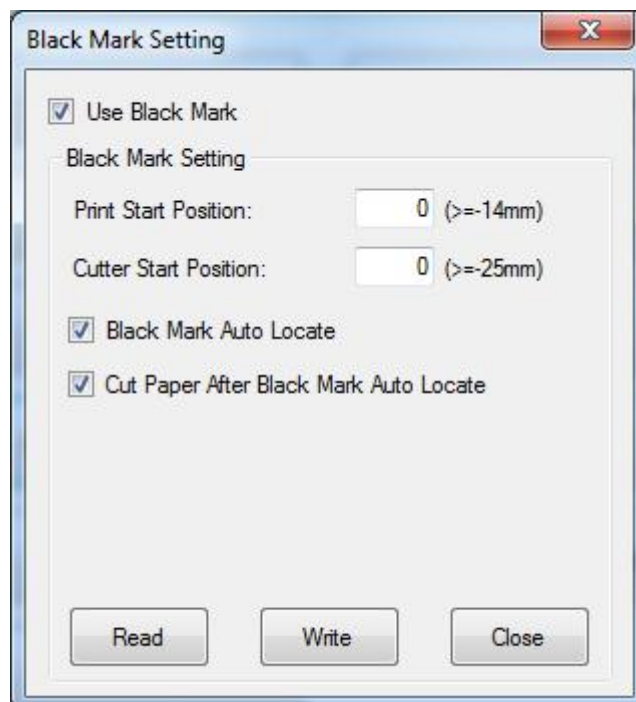
◆ **USB Port Setting**

Choose the item and click “Setting(S)”.



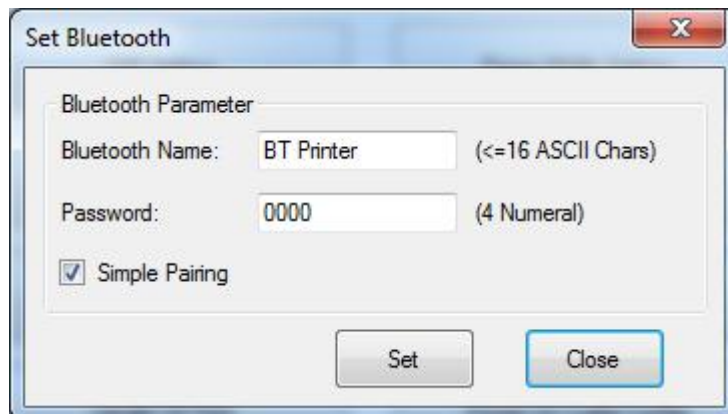
◆ **Black Mark Setting(Optional)**

Enter “Black Mark Setting” to set the print start position and cutter start position; also can set black mark auto locate and cut paper after black mark auto locate.

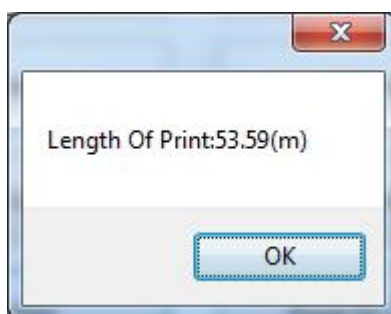


◆ **Bluetooth Setting**

Enter “Bluetooth Setting” to set Bluetooth parameter; you need to restart the printer after setting.

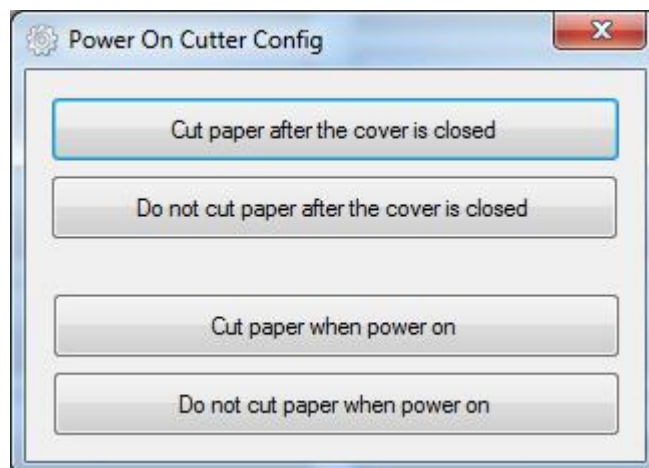


◆ **Length of Print**



◆ Cut Paper Config

Choose the item and the printer will execute the appropriate action



◆ Arabic Setting

Choose the item and the printer will execute appropriate action.

